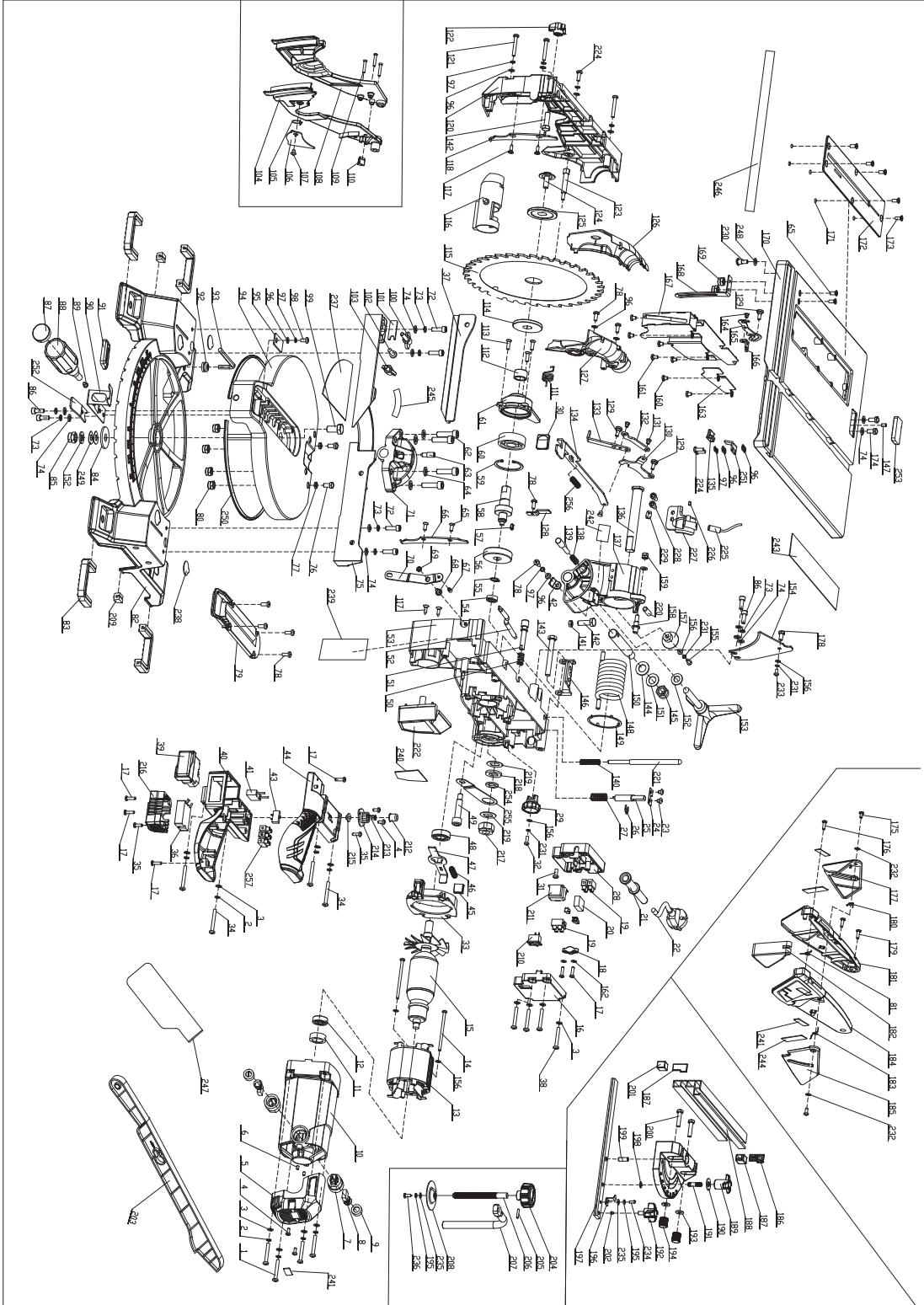




खैतान पावर

کھیتان پاور

KHAIITAN POWER
EXPECT THE BEST



KI TTCMS
TABLE TOP MITER SAW

EXPLOSION VIEW

Professional Series



کھیتان پاور
KHAIITAN POWER
 EXPECT THE BEST



SPARE PARTS LIST OF KI TTCMS

1	Pan head screw(zinc), M5x30(zinc)
2	Spring washer Ø5(zinc)
3	Flat washer Ø5(zinc)
4	Tapping screw, ST4.2X10(black)
5	Housing back cover
6	Pan head screw, M4x6(black)
7	Brush holder
8	Carbon brush assembly
9	Brush holder cover
10	Housing
11	Bearing seat
12	Bearing 6000-2Z
13	Field assembly
14	Tapping screw(zinc), ST4.2x70(zinc)
15	Armature assembly
16	Cover for electric wire box
17	Tapping screw ST4.2x16, (black)
18	Pressing line plate
19	Terminal block PA10 (two rows)
20	Inductance
21	Power cord sleeve
22	Power cord (1.0mm²x2cx2100mm VDE H05VV-F PVC)
23	Screw M5X6 (zinc)
24	Stop pin plate
25	Stop pin
26	Split Washer Ø8 (black)
27	Compression spring Ø10.3xØ12.7x28L
28	Electric wire box
29	The positioning pin knob
30	Lining board button
31	Pan head screw, M5x12 (black)
32	Pan head screw,M4x12(zinc)
33	Fan shroud
34	Pan head screw,M5x40 (zinc)
35	Tapping screw ST4.2x13 (black)
36	Soft start
37	Extension Fence
38	Pan head screw,M5 x 35 (zinc)
39	Switch
40	Lower handle
41	Capacitance
42	Arm pointer
43	Micro-switch
44	Upper handle
45	Axis locking plate in hand
46	Compression spring Ø7xØ9x36L
47	Axis locking plate
48	Bearing, 6002-2RS
49	Lower blade guard positioning bolot #20 (black)
50	Compression spring Ø9xØ11.4x20L
51	Locating pin (black)
52	Power cord 1.0mm²x2x345mm
53	Frame
54	Bearing, 607-2Z
55	Shaft circlip 14 (black)
56	Gear (40Cr)
57	Flat key 4x4x10
58	Output shaft
59	Hole circlip 47 (black)
60	Bearing,6303-2RS(CSR)
61	Bearing seat
62	Hexagon socket cap screw M8x40 (black)
63	Disk rotating pin locking screw 45# (black)
64	Washer Ø8

65	Cross recessed countersunk head screw M5x12 (black)
66	Right clamping plate
67	Fixing rivet 45# (black)
68	Dust the connecting rod screws 20# (black)
69	Hexagon thin nut M5 (black)
70	Dust the connecting rod (black) (table saw mode)
71	Supporting seat
72	Hexagon socket cap screw
73	Single coil spring lock washer
74	Flat washer Ø6
75	Back plate
76	Six hexagon head full thread bolt
77	Hexagon thin nut M6 (black)
78	Cross recessed pan head screw M5x12 (zinc)
79	Lower cut plate
80	Hexagon locknut M8 (zinc)
81	Left torque spring of upper blade guard
82	Base
83	Foot 1 (PVC)
84	Base gasket
85	Hexagon locknut M10(zinc)
86	Hexagon socket cap screw
87	Cover
88	Angle of handle
89	Angle of the handle head block
90	Latch plate
91	Spring board button
92	Spanner ring
93	Inner hexagon spanner
94	Turning table
95	Point
96	Flat washer Ø5 (zinc)
97	Single coil spring lock washer Ø5 (zinc)
98	Cross recessed pan head screw M5x10 (zinc)
99	Six hexagon head full thread bolt M10x30(black)
100	Butterfly knob
101	Clamp
102	Cross recessed pan head screw M6x20 (black)
103	Dish knob (light grey)
104	Lower blade guard (Right)
105	Small coil springs
106	Shield cover
107	Cross recessed raised countersunk head screws M5x6 (zinc)
108	Lower blade guard (Left)
109	To protect the rivets (black)
110	Buffer block of lower blade guard
111	Torsion spring of lower blade guard
112	Ring gasket 45# (black)
113	Cross recessed countersunk head screw M5x16 (black)
114	Internal pressure plate 45# (black)
115	Saw blade
116	Dust port (Table saw mode)
117	Cross recessed countersunk head tapping screw ST4.2x13 (zinc)
118	Left clamping sheet
120	Frame cover
121	Cross recessed pan head screw M5x35 (zinc)
122	Handle positioning knob
123	Lock bolt of lower blade guard 20# (black)
124	Saw blade clamp screw 45# (black)
125	Outer press plate 45# (black)
126	Outlet pipe (left)
127	Outlet pipe (right)
128	Long rod plate



खैतान पावर
KHAITAN POWER
EXPECT THE BEST



SPARE PARTS LIST OF KI TTCMS

129	Set screw for connecting rod 20# (black)
130	Self-locking connecting rod (black)
131	Connecting rod rivet 20# (black)
132	Self-locking connecting rod
133	Connecting rod for lower blade guard
134	Long connecting rod
135	Lining board button
136	Frame rotating pin 20# (black)
137	Rocking lever
138	Compress spring Ø7xØ9x25L (black)
139	Horizontal positioning pin (table saw mode) 20# (black)
140	Compress spring Ø7xØ9x36L (black)
141	Hex nut M5 (zinc)
142	Six hexagon head full thread bolt M5x20L(zinc)
143	Rotating pin for top table 20# (black)
144	Flat washer Ø12 (black)
145	Hexagon locknut M12 (zinc)
146	Table setting plate
147	Inner six angle set screws with flat M5x10 (black)
148	Big torque spring
149	Frame shim
150	Rocker rotating pin 20# (black)
151	Wave washer Ø12 (black)
152	Flat washer Ø10 (black)
153	Trigeminal handwheel
154	Riving knife (65Mn)
155	Cross recessed pan head screw M4x14 (zinc)
156	Flat washer Ø4 (zinc)
157	Rotary knob
158	Stop pin (black)
159	Hexagon locknut M6 (zinc)
160	Cross recessed pan head screw M5x6 (black)
161	Cross recessed pan head screw M5x8 (black)
162	Flat washer Ø4 (black)
163	Blade guard plate
164	The connecting rod rivet 45# (black)
165	Upper blade guard bar
166	Setting plate for upper blade guard bar
167	Saw blade guard board assembly
168	Locking plate
169	Hexagon locknut M5 (zinc)
170	Top table
171	O shaped rubber sealing ring 4x1 (black)
172	Insert plate (table saw mode)
173	Cross recessed countersunk head screw M5x8 (zinc)
174	Six hexagon head full thread bolt M6x12 (black)
175	Cross recessed tapping screw ST4.2x10 (black)
176	Cross recessed pan head tapping screws ST4.2x20 (black)
177	Rear protective cover of upper blade guard (left)
178	upper blade guard fix screw
179	Cross recessed pan head tapping screw ST4.2x13 (black)
180	Upper blade guard (left)
181	Front shield torque spring
182	Back shield torque spring
183	Movable protecting cover
184	Upper blade guard (right)
185	Rear protective cover of upper blade guard (right)
186	Back cover for miter gauge fence
187	End cap for miter gauge fence
188	Miter gauge fence
189	Rotating knob B
190	Big washer Ø6 (zinc)
191	Double ended bolt (zinc)
192	Rotating knob A
193	Protective cover plate washer Ø6 (zinc)

194	Lock knob
195	Single coil spring lock washer , normal type Ø4 (zinc)
196	Pointer for miter gauge (zinc)
197	Angle ruler
198	Miter gauge
199	Hinge pin for miter gauge Ø6x18 (black)
200	Six hexagon head full thread bolt M6x25 (zinc)
201	Front cover for miter gauge
202	End socket
203	Push stick
204	Knob of work clamp
205	Elastic cylindrical pin Ø3x16 (black)
206	Arbor of work clamp
207	Work clamp rod (zinc)
208	Work clamp plate
209	Foot 2 (PVC)
210	Laser switch
211	Transformer
212	Spring positioning sleeve
213	Compress spring Ø7xØ8.6X21L (black)
214	Spring fixe plate
215	Switch press plate
216	Soft start cover
217	Hexagon locknut M16 (zinc)
218	Frame lock thick washer
219	Frame lock washer
220	Hexagon socket set screws with flat point M8x25 (zinc)
221	Workclamp rod
222	Compression bar
224	Cross recessed pan head screw M5X14 (zinc)
225	Laser
226	Inner six angle set screws with flat M4X6 (black)
227	Laser seat
228	Hexagon socket cap screw M5X12 (black)
229	Laser transparent plate
230	Auxiliary driving screw
231	Single coil spring lock washer Ø4 (zinc)
232	Flat washer Ø3 (black)
233	Cross recessed pan head screw M4X8 (zinc)
234	Cross recessed pan head screw M4X8 (zinc)
235	Flat washer Ø4 (zinc) M4x10
236	Cross recessed pan head screw
237	Turning table Label
238	No hand label
239	Label
240	Rating Label
241	Logo label
242	Laser warning label
243	Bevel scale label
244	Scale label
245	Scale label
246	Table scale label
247	Dust Bag
248	Flat washer Ø6 (big)
249	Wave washer Ø10
250	Friction between gasket (Q235-A)
251	Scaleboard (Q235-A)
252	Limiter for Spring board
253	Screw cover
254	Gasket A
255	Fix plate
256	line bank
257	Connected with the fixed plate