

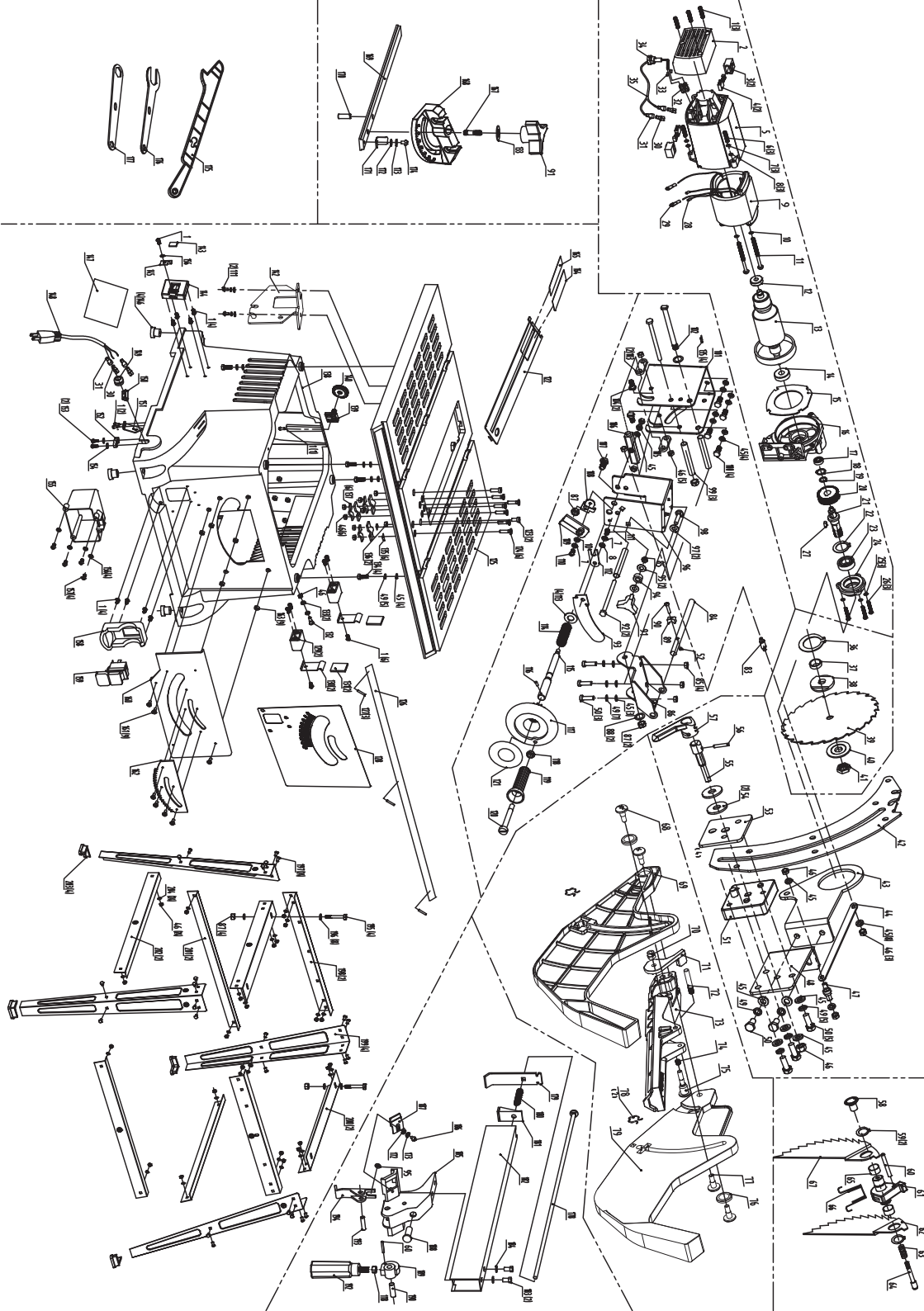


खैतान पावर

کھیتان پاور

**KHAIITAN POWER**

**EXPECT THE BEST**



**KP TS**  
**10" TABLE SAW**

**EXPLOSION VIEW**

*Professional Series*



کھیتان پاور  
KHAITAN POWER  
EXPECT THE BEST



## SPARE PARTS LIST OF KP TS

1	Cross recessed pan head tapping screws
2	Rear cover
3	Brush holder
4	Brush assembly
5	Motor housing
6	Hexagon socket head cap screws M5X30
7	Spring washer
8	Flat washer
9	Stator assembly
10	Flat washer
11	Cross recessed pan head tapping screws ST4.8X65
12	Deep groove ball bearing 6200-2Z
13	Armature
14	Deep groove ball bearing 6202-2Z
15	Wind washer
16	Gear box
17	Deep groove ball bearing 607-2Z
18	Circlips for shaft
19	Wave spring washers
20	Big gear
21	Output shaft
22	Circlips for holes D35
23	Deep groove ball bearing 6003-2Z
24	Bearing cover
25	Serrated lock washer external teeth Φ5
26	Cross recessed countersunk head screw M5X18
27	Flat key
28	Cross recessed pan head tapping screws
29	Brush terminal
30	6.3 slot
31	6.3 plastic cover
32	Line bank
33	Copper connecting
34	Strain relief
35	Connecting cord
36	Circlips for shaft
37	Bearing washer
38	Inner flange
39	Blade
40	Outer flange
41	Blade nut
42	Riving knife
43	Support board
44	Linkage
45	Flat washer Φ6.6*Φ12*1.5
46	Nut M6
47	Riving knife Linkage Pin
48	Riving knife adjust plate
49	Spring washer Φ6
50	Screw
51	Riving knife fix plate
52	Outer hexagon nut M5
53	Riving knife Plate
54	Lock washer
55	Lock shaft
56	Lock shaft pin
57	Lock handle
58	Antikickback pawls handle
59	C-ring D12
60	Parallel pin Φ3x26
61	Antikickback pawls fix plate
62	Antikickback pawls right
63	Antikickback pawls spring
64	Antikickback pawls handle
65	Antikickback pawls washer
66	Antikickback pawls torsional spring
67	Antikickback pawls left
68	Blade cover screw A

69	Left blade cover
70	Locknut M5
71	Lock knob of the blade cover
72	Fixed pin
73	Swinging arm of the protect guard
74	Blade cover spring
75	Screw
76	Friction pads A
77	Blade cover screw B
78	Blade cover position steel wire
79	Blade cover right
83	Angle pin
84	Angle pin axle
85	Outer hexagon nut M6
86	Bracket
87	Nylon locknut M8
88	Flat washer Φ8*Φ16*1.5
89	Support board
90	Hexagon head screws M5X22
91	Lock knob
92	Hexagon bolt M6X85
93	Defence board
94	Fixed pin
95	Big washer Φ6.6*Φ16*1.2
96	Connecting stamping
97	Wave washer D8
98	Bolt
99	Sleeve
100	Hexagon bolt M6X20
101	Depth adjustment stamping
102	Depth adjustment stamping pin
103	Linkage
104	Linkage pin
105	Depth adjustment Linkage nut
106	Depth adjustment pin
107	Hexagon socket cap screws M8X14
108	Scale locating plate
109	Angle indicator
110	Pan head screws with cross recessed M5X14
111	Pan head screws with cross recessed M5X10
112	Board
113	Spring washer D12
114	Depth adjustment screw spring
115	Depth adjustment screw
116	Pin Φ2.5X22
117	Handle wheel
118	Hex nut M8
119	Handle wheel handle
120	Handle wheel handle screw
121	Handle wheel label
122	Insert A
123	Pan head screws with cross recessed M6X25
124	Screw
125	Main table
126	Main table scale label
127	Rivet Φ2x5
128	Front label
129	Fence block
130	Fence block leaf spring
131	Heat shrink tubing
132	Push stick screw
133	Flat washer Φ6*Φ16*1.5
134	Hexagon socket cap screws M6x25
135	Adjust washer
136	Hexagon nuts M6

137	Plate
138	Cabinet
139	Blade stock bolt
140	Blade stock knob
142	Blade cover support A
143	Heat shrink tubing
144	Miter guage storage
145	Miter guage storage leaf spring
146	Foot-pad
147	Warning label A
148	Power cord
149	Strain relief
150	Switch cover sealing block
151	Antikickback pawls fix plate
152	Cord clamp
153	Pan head screws with cross recessed ST4.2X16
154	Flat washer Φ4*Φ8*0.5
155	Switch cover
156	Flat washer Φ4*Φ10*1
157	Pan head screws with cross recessed ST4.2X16
158	Switch box
159	Switch
160	Inside Scaleboard
161	Pan head screws with cross recessed
162	Angle rack
163	Nylon locknut M4
164	Friction washer A
165	Friction washer B
166	
167	Stud
168	Miter gauge
169	Miter gauge bar
170	Pin
171	Miter gauge indicator
172	Flat washer Φ4.3*Φ8*0.5
173	Spring Washer D4
174	Pan head screws with cross recessed M4x8
175	Push stick
176	Big wrench
177	Small wrench
178	Connect rod
179	Rear panel
180	Spring for the rod
181	Rear insert panel
182	Rip fence
183	Hexagon head screws M6X12
184	Ext. Tooth Washer Ø6
185	Pivot
186	Flat washer Φ6*Φ18*1.5
187	Indicator
188	Adjustment nut
189	Cam
190	Cam pin
191	Pan head screws with cross recessed M5x12
192	Rip fence handle
193	Pin
194	Rear plate assembly
195	Pan head screws with cross recessed M8X45
196	Flat washer Φ8*Φ22*2
197	Cup head square neck bolts M6X12
198	Stand C
199	Stand A
200	Stand B
201	Stand E
202	Stand D
203	Stand foot-pad
204	Flat washer Φ6*Φ12*1.5