

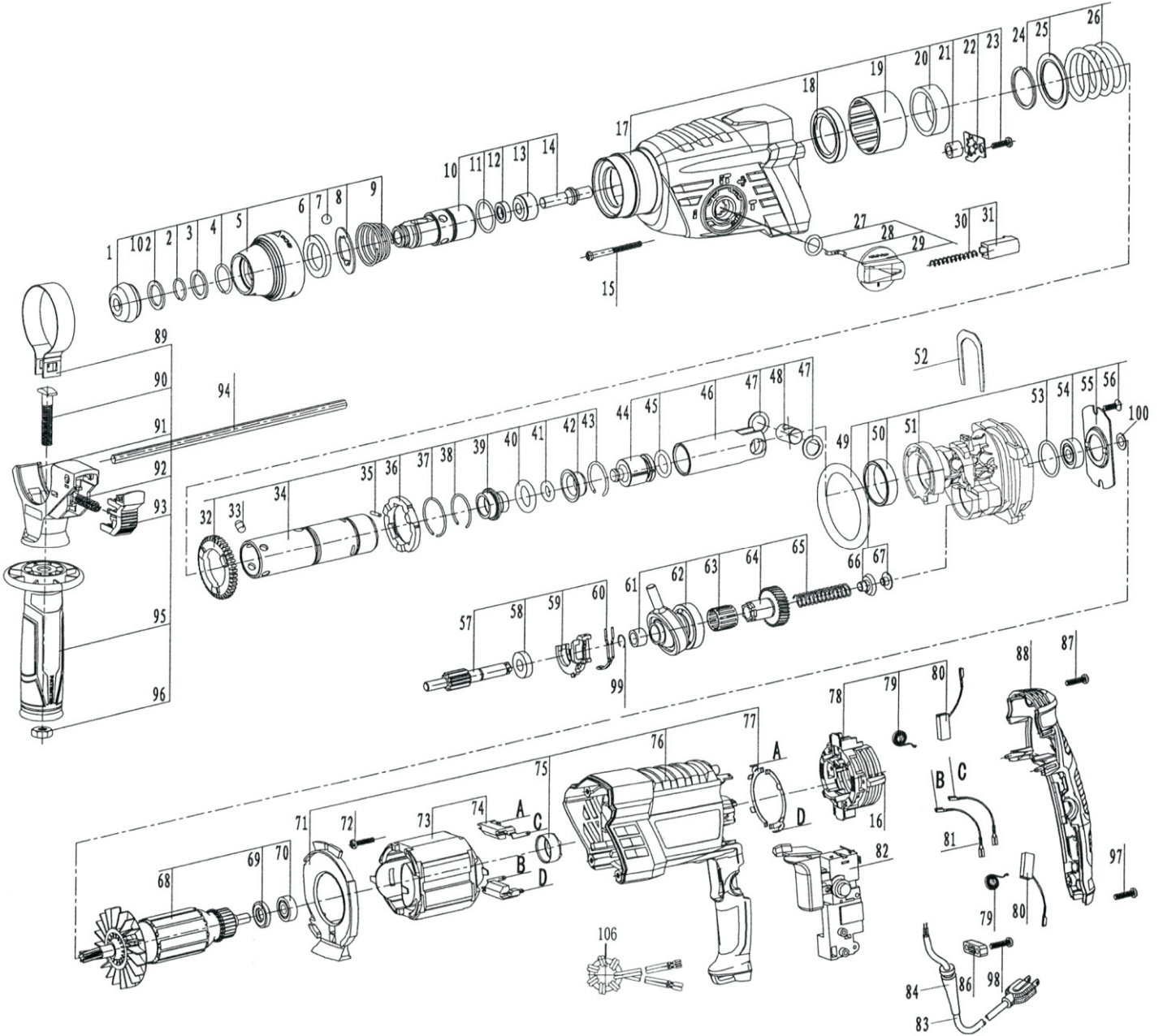


खैतान पावर

کھیتان پاور

**KHAITAN POWER**

**EXPECT THE BEST**



**EXPLOSION VIEW**

**KP RH26  
ROTARY HAMMER**

Industrial Series



## SPARE PARTS LIST OF KP RH26

No.	Description	Qty.
1	Protective cap	1
2	Retaining ring $\phi 14 \times 1.5$	1
3	Retaining washer 16x22x1.6	1
4	Retaining ring $\phi 19 \times 2$	1
5	Protection sleeve	1
6	Protection sleeve washer 21x32x4	1
7	Steel ball C7.14	1
8	Floriare washer	1
9	Compression Spring	1
10	Tool Holding Fixture	1
11	O-ring $\phi 21.5 \times 2$	1
12	Rotary Shaft lip seal 9x16x5	1
13	Thrust Ring	1
14	Striker Pin	1
15	ST4.5x40 self-tapping screw	4
16	Spring for Carbon brush Plate	2
17	Gear Housing	1
18	Rotary Shaft lip seal 30x41x7	1
19	Supporting Disc	1
20	HK3012 Needel bearing	1
21	HK0709 Needel bearing	1
22	Tab washer	1
23	ST4.2x16 self-tapping screw	1
24	Retaining ring	1
25	Supporting Disc Washer	1
26	Compression spring	1
27	Model selector O-ring 11x2.5	1
28	Model selector Drive pin	1
29	Model selector Clamp Handle	1
30	Compression spring $\phi 5.8 \times 44$	1
31	Model selector red button	1
32	40 Teeth Cylindrical Gear	1
33	Positioning steel ball	4
34	Pipe	1
35	Straight Pin $\phi 2.5 \times 12$	3
36	Catch Disk	1
37	Retaining Ring $\phi 28 \times 1.5$	1
38	Retaining Ring $\phi 27.5 \times 1.5$	1
39	Guide Bushing	1
40	O-ring $\phi 18 \times 3.5$	1
41	O-ring $\phi 9.6 \times 3.5$	1
42	Holding Jacket	1
43	Retaining Ringe $\phi 28 \times 2$	1
44	Piston	1
45	Piston O-ring $\phi 15.1 \times 3$	1
46	Cylinder	1
47	Cylinder washer	2
48	Cylinder Pin	1
49	Seal O-ring $\phi 53 \times 7$	1
50	Plain Bearing	1

No.	Description	Qty.
51	Intermediate Flange	1
52	Holding Plate	1
53	609 Bearing O-ring $\phi 23.2 \times 2.4$	1
54	609 Bearing	1
55	End Shield	1
56	M4x10 screw	2
57	Toothed Shaft	1
58	699 Bearing	1
59	Switching Element	1
60	Switching Element Ring	1
61	HK0910 Plain Bearing	1
62	Pendulum rod bearing	1
63	K15 Needle-Roller	1
64	33 dens Slanting Gear	1
65	Compression spring	1
66	spring seat(plastic)	1
67	Washer	1
68	Armature With Fan	1
69	Plastic washer	1
70	607 Bearing	1
71	Air-Deflector Ring	1
72	ST3.5x14 self-tapping Screw	2
73	Stator	1
74	Suppression Filter	2
75	Rubber Bushing	1
76	Motor Housing	1
77	Switch Contact	2
78	Brush Plate	1
79	Carbon Brush Spring	2
80	Carbon Brush Set	2
81	Connecting Wire	2
82	Switch	1
83	Cable	1
84	Cable protective jacket	1
86	Press cable board	1
87	ST4.2x35 self-tapping screw	1
88	Housing Cover	1
89	Clamping Band	1
90	T-Head Bolt	1
91	handle support	1
92	Depth guage lock spring	1
93	Depth guage lock	1
94	Depth guage	1
95	Auxiliary handle	1
96	M8 Nut	1
97	ST4.2x25 self-tapping screw	2
98	ST4x16 self-tapping screw	2
99	Toothed Shaft Retaining ring	1
100	609 bearing washer 9.3x13x0.5	1
102	Protective cap washer 11x17x1	1