



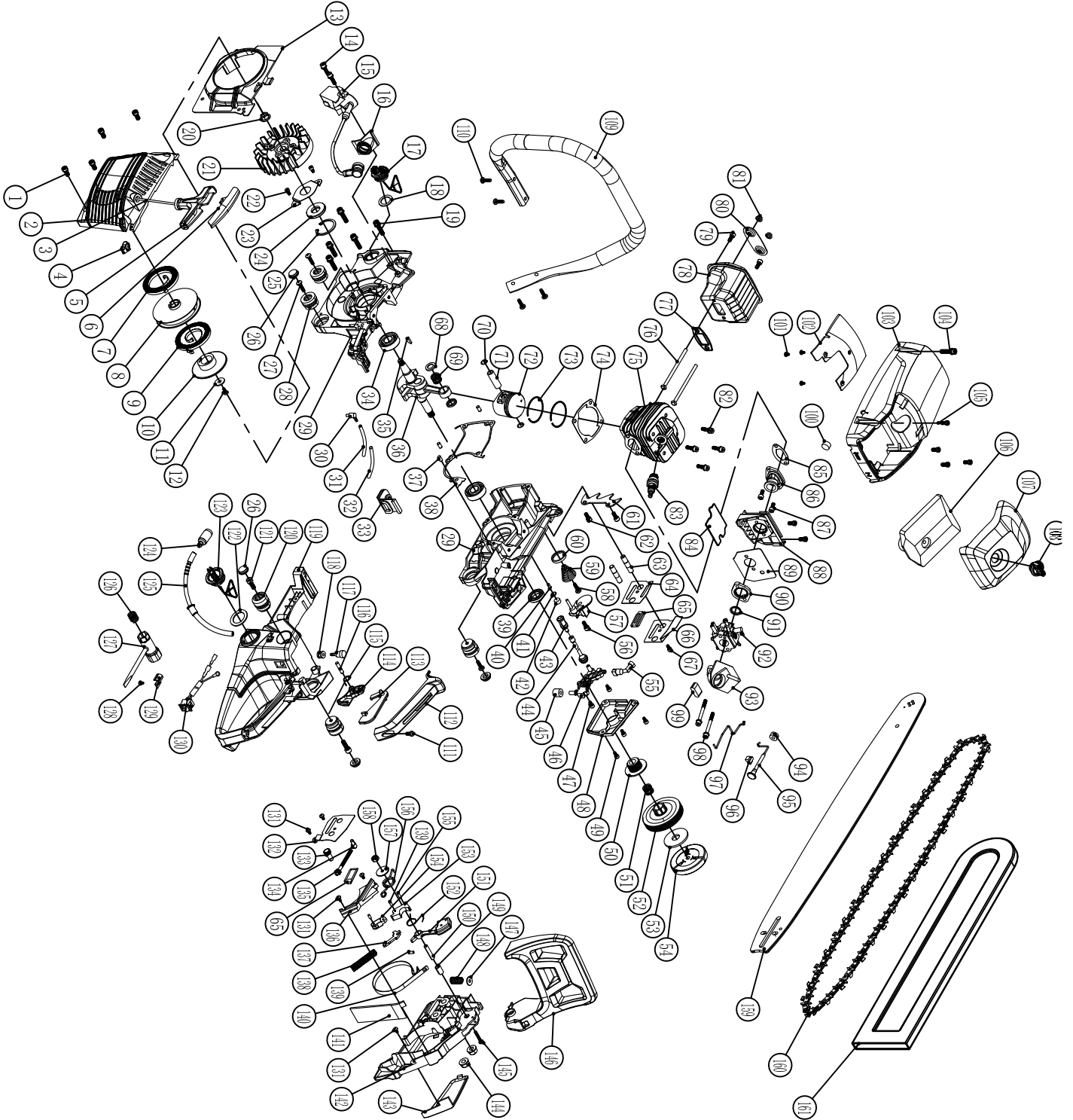
خیتان پاور

کھیتان پاور

KHAIITAN POWER
EXPECT THE BEST



SPARE PARTS LIST OF KP-CS-62



KP-CS-62
CHAIN SAW

EXPLOSION VIEW

Professional Series



No.	Name	No.	Name	No.	Name
1	M5*14 SCREW	55	oil nozzle	109	handle
2	easy starter cover	56	M5*14 screw	110	ST5*14 screw
3	pull string	57	block chain block	111	ST5*14 screw
4	protector cover	58	ST5*14screw	112	handle cover
5	starter handle	59	tower spring	113	trigger control arm
6	starter handle cover	60	tower spring seat	114	trigger
7	small coil spring	61	wood catcher	115	trigger spring
8	rope wheel big	62	M5*10screw	116	6*25 pin
9	big coil spring	63	M8*42 bolt	117	balancer
10	rope wheel small	64	gasket	118	balancer cover
11	washer5*16*1.5	65	lead chain block	119	oil tank
12	ST5*14 screw	66	cover	120	long shock-absorber(5801)
13	air deflector	67	M4*8 screw	121	M5*14 screw
14	M5*20screw	68	antiattrition wahser	122	fuel tank gasket
15	Ignation	69	piston needle	123	fuel cap
16	spark plug cap protector	70	piston pin spring	124	fuel filter
17	oil cap	71	piston pin	125	fuel pipe
18	oil cap gasket	72	piston	126	sleeve fix spring
19	M5*30 screw	73	piston ring	127	sleeve
20	M8*1 nut	74	cylinder gasket	128	ST4*8 screw
21	Flywheel	75	cylinder	129	sleeve iron plate
22	M4*6 screw	76	M5*85 screw	130	on/off switch
23	oil seal plate	77	muffler gasket	131	ST4*8 screw
24	oil seal 15*35*4.5	78	muffler	132	tensioner cover
25	inner jump spring35	79	M5*12 screw	133	big adjustment gear wheel
26	decorative cover	80	muffler cover	134	adjustment block
27	ST15*14 screw	81	M5 nut	135	small adjustment gear wheel
28	short shock absorption	82	M5*22 screw	136	brake plate
29	crankcase	83	spark plug	137	brake pusher
30	negative pressure nozzle	84	carburetor heat insulation gasket	138	brake spring
31	vacuum pipe	85	air intake gasket	139	3*8pin
32	heat insulation pipe	86	air intake	140	brake belt
33	seal seat	87	M5*12screw	141	oil stopper sheet
34	6202 bearing	88	air intake support	142	brake cover
35	woodruff key 3*10	89	air intake support gasket	143	brake label
36	crankshaft	90	air intake flange	144	M8 nut
37	pin 5*10	91	copper ring	145	M5*35screw
38	crankcase gasket	92	carburetor	146	front board
39	oil seal 15*28*4.5	93	air filter seat	147	spring gasket
40	air breather	94	choker rod protector	148	buffer spring
41	air breather spring	95	choker rod	149	heavy punch bushing
42	air breather sponge	96	choker rod absorbor	150	heavy punch pin cover
43	oil filter	97	throttle pusher	151	heavy punch
44	oil pipe	98	M5*50 screw	152	heavy punch spring
45	oil pump sponge	99	pipe cover	153	lever 1
46	oil pump	100	on/off switch plastic cover	154	lever 2
47	M4*14 screw	101	ST3*8 screw	155	3*14pin
48	oil pump cap	102	air guidepad	156	brake spring
49	M4*10 screw	103	top cover	157	wahser 5*22*1.5
50	turbo	104	M5*35 screw	158	M5 nut
51	clutch needle bearing	105	M5*14 screw	159	guide bar
52	cluth shell	106	air filter	160	chain
53	clutch gasket	107	air filter cover	161	guide bar cover
54	clutch	108	plastic nut		