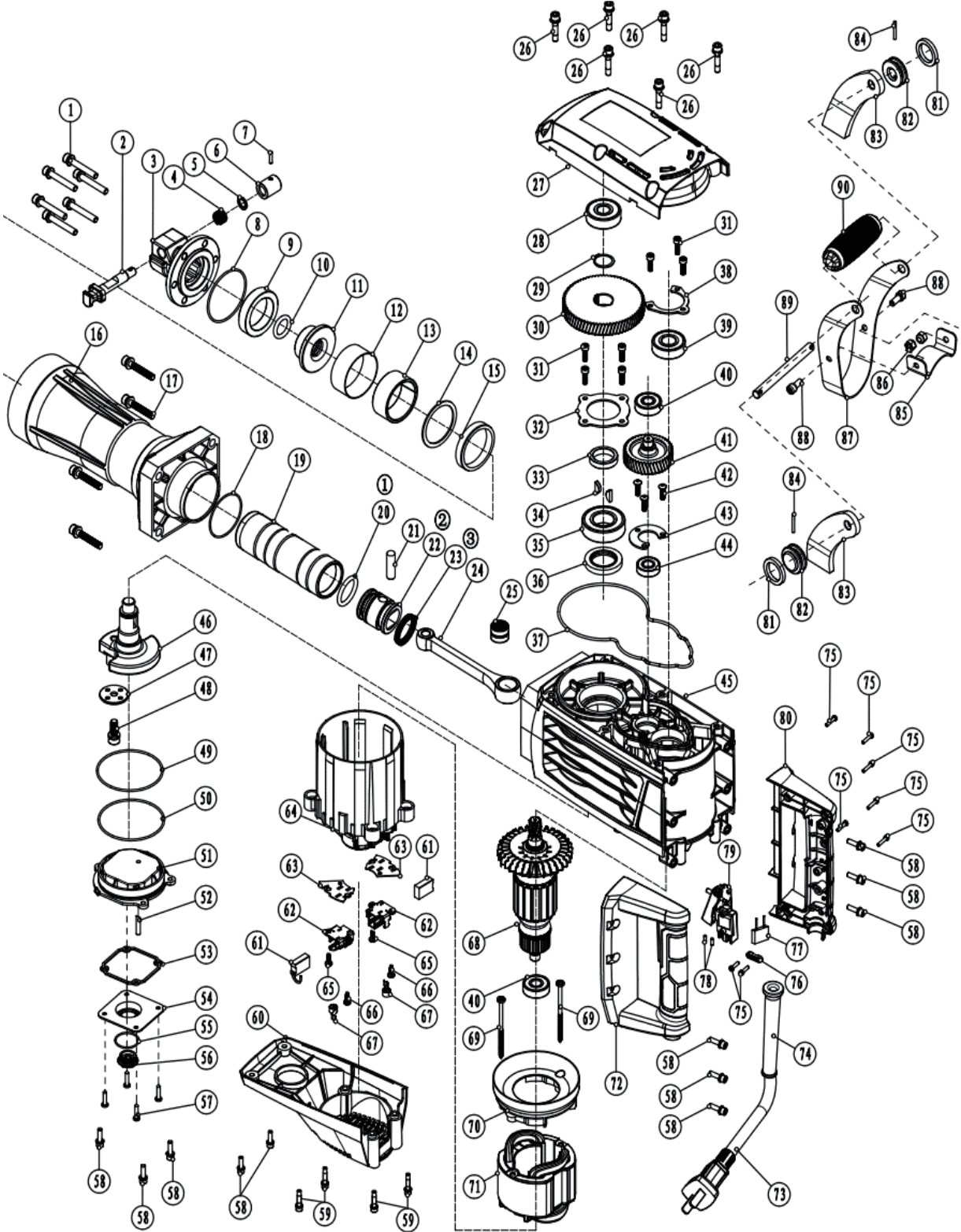




खैतान पावर

کھیتان پاور

KHAIITAN POWER
EXPECT THE BEST



KI DH 18
DEMPLITION HAMMER

EXPLOSION VIEW

Professional Series



SPARE PARTS LIST OF KI DH 18

NO.	PARTS NAME	QTY	NO.	PARTS NAME	QTY
1	Screw M10x40	6	52	Oil cord	1
2	Lockpin	1	53	Seal packing	1
3	Bit holder	1	54	Cover of oil box	1
4	Spring $\phi 16 \times \phi 1.4 \times 24$	1	55	O ring $\phi 20 \times \phi 2.5$	1
5	Washer $\phi 12.5 \times \phi 18 \times 2$	1	56	Oil gauge	1
6	Lockpin sleeve	1	57	Screw ST4.8x20	4
7	Roll pin $\phi 4 \times 18$	1	58	Screw M6X22	12
8	O ring $\phi 65.2 \times 1.9$	1	59	Screw M6X35	4
9	Shock pad $\phi 48.8 \times \phi 68 \times 14.5$	1	60	Lower cover of gearbox	1
10	O ring $\phi 23 \times \phi 5.4$	1	61	Carbon brush	2
11	Shank sleeve	1	62	Brush holder	2
12	Splitting rubber ring $\phi 65 \times \phi 67.4 \times 28$	1	63	Mounted plate	2
13	Split ring	1	64	Insulation sleeve	1
14	Washer $\phi 57 \times \phi 68.5 \times 2$	1	65	Screw M8x18	2
15	Buffer ring $\phi 58.5 \times \phi 68.5 \times 9.5$	1	66	Screw ST4.2x16	2
16	Cylinder case	1	67	Disc spring	2
17	Screw M8x50	4	68	Armature	1
18	O ring $\phi 59 \times \phi 2$	1	69	Screw ST4.8X80	2
19	Cylinder	1	70	Fan baffle	1
20	O ring	1	71	Stator	1
21	Piston pin $\phi 12 \times 44$	1	72	Left handle	1
22	Piston	1	73	Cable and plug	1
23	Seal ring	1	74	Cable protector	1
24	Connecting rod	1	75	Screw ST4.2X16	8
25	Needle bearing 1820	1	76	Cable clamp	1
26	Screw M6x30	6	77	Capacitance	1
27	Gear box cover	1	78	Rubber column	2
28	Bearing 6302	1	79	Switch	1
29	Circlip for shaft	1	80	Right handle	1
30	Gear	1	81	Handle cover	2
31	Screw M5x16	7	82	Pin cover	2
32	6205 Bearing press plate	1	83	Cover	2
33	Distance ring	1	84	Roll pin $\phi 3 \times 25$	2
34	Woodruff key $4 \times 6.5 \times 16$	2	85	Handle stay	1
35	Bearing 6205	1	86	Nut	2
36	Seal ring $\phi 30 \times \phi 45 \times 6$	1	87	Auxiliary handle support	1
37	Seal ring	1	88	Screw M8X20	2
38	6203 Bearing press plate	1	89	Handle shaft	1
39	Bearing 6203	1	90	Auxiliary handle grip	1
40	Bearing 6201	2	91		
41	Gear	1	92		
42	Screw M5x16	3	93		
43	6001 Bearing press plate	1	F101		
44	Bearing 6001RS	1	F102		
45	Gear box	1	F103		
46	Crank shaft	1	F104		
47	Crank washer	1	F105		
48	Screw M8x25	1	F106		
49	O ring $\phi 86 \times \phi 2$	1	F107		
50	O ring $\phi 87 \times \phi 2.5$	1	F108		
51	Oil box	1			