

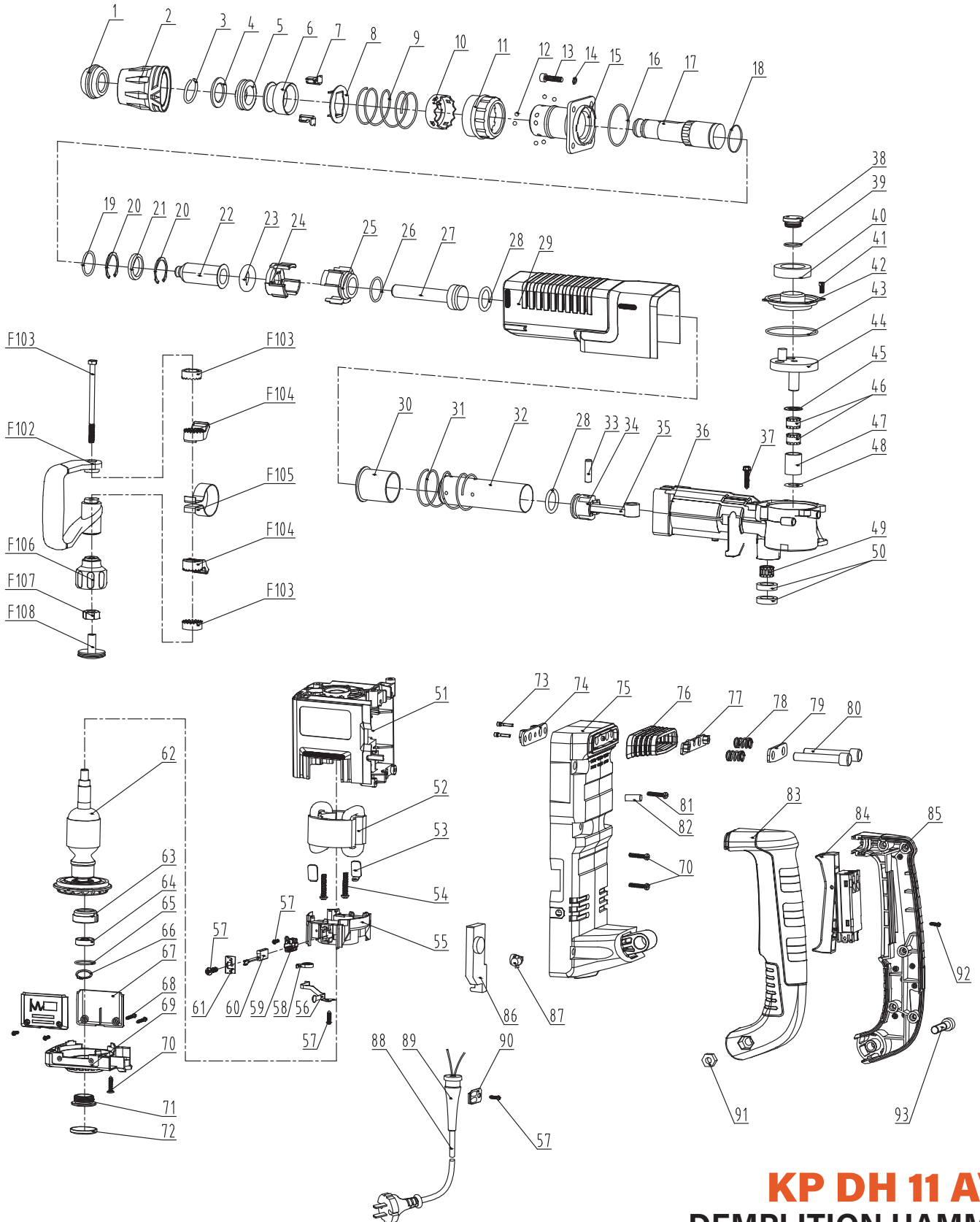


खैतान पावर

کھیتان پاور

**KHAIITAN POWER**

**EXPECT THE BEST**



**KP DH 11 AVT**  
**DEMPLITION HAMMER**

**EXPLOSION VIEW**

*Professional Series*



## SPARE PARTS LIST OF KP DH 11 AVT

NO.	PARTS NAME	QTY	NO.	PARTS NAME	QTY
1	Rubber cap	1	52	Stator	2
2	Protective sleeve	1	53	Stator clamp	2
3	Circlip ring 27*2	1	54	Tapping screw st5*55	1
4	Washer 30*48.5*3	1	55	Carbon brush holder set	1
5	Shock absorption ring	1	56	Contact plate	1
6	Movement limiter	1	57	Tapping screw st3.5x13	6
7	Insert block	2	58	Circlip	1
8	Position lock ring	1	59	Carbon brush set	1
9	Support ring spring	1	60	Carbon brush	1
10	Change plate	1	61	Carbon brush wire set	2
11	Position adjustment ring	1	62	Armature	1
12	Steel ball 6.5	8	63	Bearing sleeve 6200	1
13	Bolt m8*30	4	64	Bearing 6200	1
14	Spring washer $\varnothing$ 8	4	65	O ring 34*29.2*2.4	1
15	Iron head	1	66	Circlip 10	1
16	O ring 63*2.65	1	67	Slide cover	2
17	Hammer rod sleeve	1	68	Tapping screw st4.2x13	4
18	O ring 37.5*1.8	1	69	Bottom cover	1
19	O ring 31.5*2.5	1	70	Tapping screw st5x25	8
20	Circlip 41	2	71	Threaded ring	1
21	Seal ring 32*42*7	1	72	Protective cover	1
22	Impact pin	1	73	Screw m5x16	2
23	O ring 22*11	1	74	Front shock absorber fixing plate	1
24	Control plate	1	75	Rear cover	1
25	Fixed distance sleeve	1	76	Shock-absorbing sleeve	1
26	O ring 41*34.8*3.1	1	77	Rear shock absorber fixing plate	1
27	Tup	1	78	Shock-absorbing spring	2
28	O ring 30.7*4.9	2	79	Front shock absorber	1
29	Cover	1	80	Screw m8x52-7	2
30	Control plate	1	81	Screw m6x35	2
31	Control plate spring	1	82	Sleeve 6.5x8.5x19	2
32	Cylinder	1	83	Switch handle-left	1
33	Piston pin 10x37.5	1	84	Switch	1
34	Piston	1	85	Switch handle-right	1
35	Drive rod	1	86	Speed control	1
36	Gear box	1	87	Pilot lamp	1
37	Hexagon tapping screw st6.3*32	4	88	Cable	1
38	Small threaded ring	1	89	Cable guard	1
39	O ring 26*21*2.4	1	90	Cable clip	1
40	Oil tank wool washer 39*79*20	1	91	Nut m8	1
41	Bolt m5*16	4	92	Tapping screw st4x16	5
42	Shell cover	1	93	Bolt m6*40	1
43	O ring 82.8*77*2.9	1	F101	Bolt m8x130	1
44	Eccentric gear	1	F102	Front handle	1
45	Washer17*28*1	1	F103	Notched disc	2
46	Needle roller bearing 16*22*16	2	F104	Claming block	2
47	Needle roller sleeve 44.2	1	F105	Clamp ring	1
48	Washer 17*28*0.5	1	F106	Claming knob	1
49	Needle roller bearing rna4902	1	F107	Nut	1
50	Seal ring 18x31x6	2	F108	Knob cover	1
51	Housing	1			