

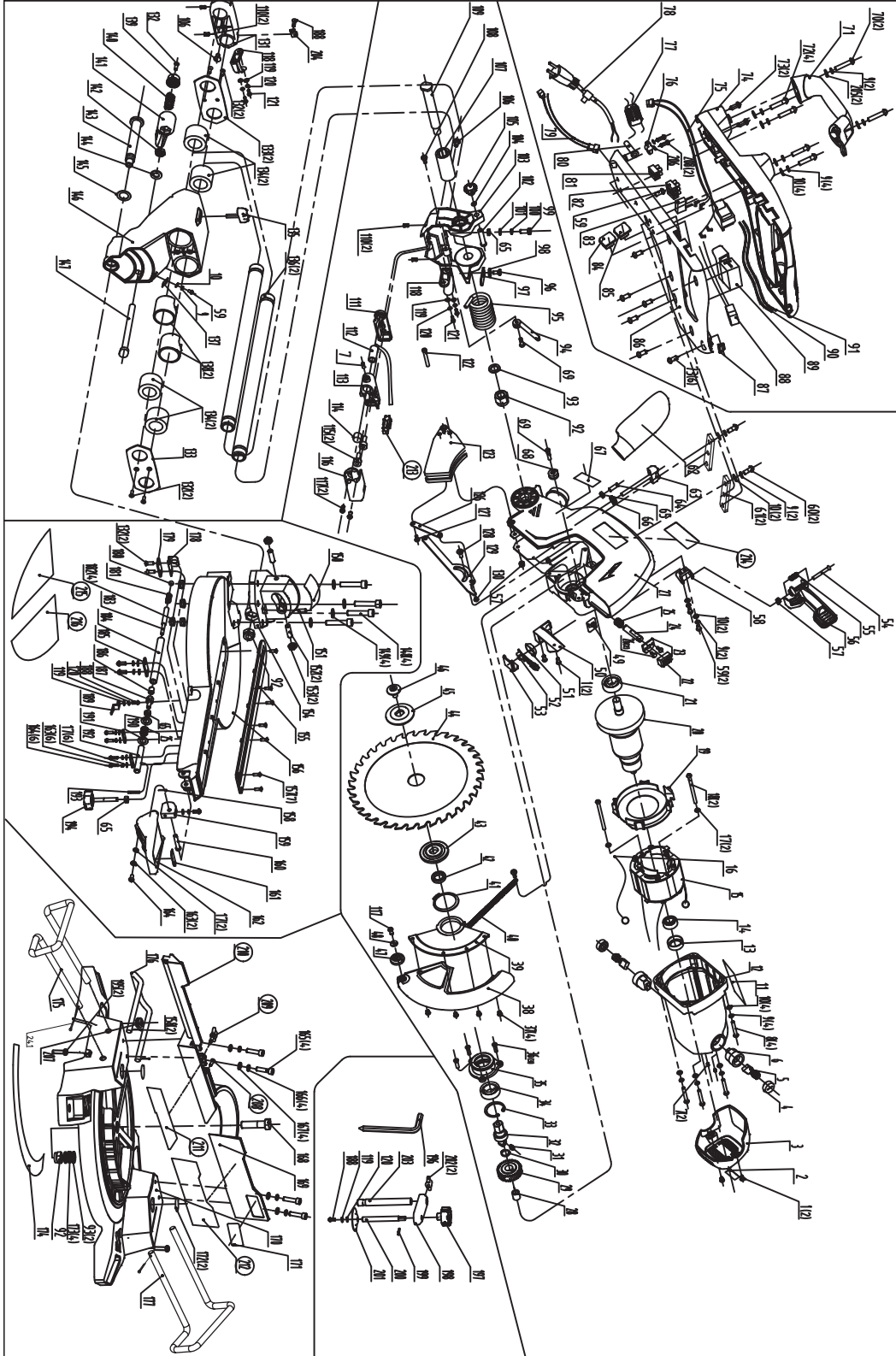


खैतान पावर

کھیتان پاور

**KHAIITAN POWER**

**EXPECT THE BEST**



**KI SMS 12**  
**12" SLIDING MITER SAW**

**EXPLOSION VIEW**

*Professional Series*



کھیتان پاور  
KHAITAN POWER  
EXPECT THE BEST



## SPARE PARTS LIST OF KI SMS 12

Part No.	description
1	Cross recessed pan head tapping screw ST4. 2X14(black)
2	Housing label
3	Motor back cover
4	Carbon brush cap
5	Carbon brush assembly
6	Carbon brush holder assembly
7	Inner hexagon screw M4X6(black)
8	Cross recessed pan head screw M5X35(zincing)
9	Spring washer 5(zincing)
10	Flat washer 5(zincing) 5x 10x1
11	Label
12	Motor housing
13	Rubber bearing support(NBR)
14	Bearing(6000-2z)
15	Field assembly
16	Field connecting wire(18AWG)
17	Flat washer 5(black) 5x 10x1
18	Cross recessed pan head tapping screw ST4. 8X70(black)
19	Baffle(in black)
20	Armature assembly
21	Bearing(6202-2RS)
22	Spindle lock knob(in black)
23	Spindle lock plate(zincing)
24	Spindle lock pin 45#(black and quench)
25	Spindle lock spring(65Mn)
26	Cross recessed countersunk head screw M4X8(zincing)
27	Upper guard(silver)
28	Bearing(HK1016)
29	Bull gear(black)
30	Shaft Circlips 14
31	Flat key 5X12 (black)
32	Output shaft
33	Hole circlip 40(black)
34	Bearing(6203-2RS)
35	Top cover
36	Cross recessed countersunk head screw M5X16( black with thread locker)
37	Rivet 05x7(Zincing)
38	Plastic Lower guard
39	AL blade guard
40	Lower guard spring(black)
41	Shaft Circlips 45
42	Shaft sleeve(in black)
43	Inner flange(black)
44	Blade
45	Outer flange(black)
46	Flange screw(black)
47	Lower guard rolling wheel(in black)
48	Flat washer 3(3X10X1)
49	Blade cover warning label
50	LED support(black)
51	LED viewfinder(chrome plating)
52	LED lamp
53	LED glazing(clear)
54	Cross recessed pan head screw M5X40(zincing)
55	Upper guard self-lock spring(black)
56	Safety lock handle(in black)
57	Loose-proof nut M5(zincing)
58	Safety lock support(zincing)
59	Cross recessed pan head screw M5X10(zincing)
60	Cross recessed pan head screw M5X14(zincing)
61	Handle connecter
62	Dust bag

Part No.	description
63	Height adjustment knob(black) with M5x55 screw
64	Inner hexagon screw M6X20(black)
65	Nut M6(Zincing)
66	Height adjustment nut( <b>black</b> )
67	Laser label
68	Spring wheel(in black)
69	Step screw(black)
70	Cross recessed pan head screw M5X16(zincing)
71	Handle assembly
72	Cross recessed pan head screw M5X45(zincing)
73	Cross recessed pan head tapping screw ST4. 2X16(black)
74	Top Handle overmold
75	Transformer
76	Cord clamp
77	Inductor
78	Plug 2x1.0 with wire clamp,3m rubber cable
79	Laser and LED connecting line 24AWGx2
80	Cord sleeve(in black)
81	Terminal block(two)
82	Terminal block(three)
83	Capacitance
84	Laser switch
85	LED switch
86	Lower handle overmold
87	Working light transparent cover
88	Working light
89	Switch trigger(light grey)
90	Connecting wire A inside handle(18AWG white)
91	Connecting wire B inside handle(18AWG brown)
92	Loose-proof nut M12(zincing)
93	Flat washer D12(zincing) 10x 24x2
94	Sleeve(black)
95	Torsion spring(black)
96	Height adjustment step screw(black)
97	Height adjustment plate(zincing)
98	Wave washer 6(black)
99	Hexagon screw M6X20(zincing)
100	Spring washer D6(zincing)
101	Flat washer D6(zincing)
102	Bracket stop pin
103	Bracket for upper guard
104	O washer 4.5*8.1*1.8 (rubber)
105	Bevel lock pin cap(in black)
106	Bumper(in black)
107	Torsion spring sleeve(in black)
108	Lever screw(black)
109	Pivot pin for upper guard(black)
110	Inner hexagon screw M5X6(black with thread locker)
111	Laser set B
112	Laser
113	Laser set A
114	Laser transparent plate
115	Inner hexagon screw M5X20(zincing)
116	Laser support C(black)
117	Cross recessed pan head tapping screw ST3X8(black)
118	Winding support(black)
119	Flat washer D4 (zincing)
120	Spring washer D4(zincing)
121	Cross recessed pan head screw M4X8(zincing)
122	Lower guard back cover locating screw(black)
123	Lower guard cover rivet(black)
124	Lower guard cover on right
125	Lower guard cover on left
126	Lower guard lever(black)
127	Lower guard cover step screw(black)
128	Lever locating screw(black)
129	Lower guard cover lever(black)
130	Lower guard lever rivet(black)
131	Linear rod support bracket
132	Cross recessed countersunk head screw M5X10(black)
133	Bearing cover(black)
134	Bearing(standard with 25X40X30)
135	Linear rod stop knob(black)
136	Linear rod

Part No.	description
137	Bevel angle scale indicator(clear with a red line)
138	Bearing support(black)
139	Linear rod support bracket lock knob(light grey)
140	Linear rod support bracket lock handle spring(black)
141	Linear rod support bracket lock handle(dark grey)
142	Nut M10(7mm with zincing)
143	Pivot pin for linear rod support bracket(black)
144	Flat washer D10 10x 20x2(zincing)
145	Friction washer( <b>black</b> )
146	Linear rod support bracket arm
147	Bevel angle lock pin(black)
148	Inner hexagon screw M8X45(black)
149	Flat washer D8(black)
150	Angle of labeling
151	Inner hexagon screw M5X20(black)
152	Inner hexagon screw M8X30(zincing)
153	Nut M8(zincing)
154	Table pivot bracket
155	Slotted plate
156	Turning table
157	Cross recessed countersunk head screw M4X10(zincing)
158	Pin on the table lock handle 2.5X16(zincing)
159	Locking cam(black)
160	Cam pin(black)
161	Turning table lock handle plate
162	Turning table lock handle
163	Spring washer 5(black)
164	Cross recessed pan head screw M5X10(black)
165	Inner hexagon screw M6X20(black)
166	Spring washer D6(black)
167	Flat washer D6(black)
168	Base screw(black)
169	Fence
170	Base
171	Fence Label
172	Base warning Label
173	Wave washer 12 (black)
174	Base Scale label
175	Left extension bar
176	Balancing pole
177	Right extension bar
178	Miter lock spring lever(black)
179	Miter lock plate(black)
180	Steel ball in 8mm diameter
181	Miter lock spring(black)
182	Loose-proof nut M8(zincing)
183	Miter lock middle lever(black)
184	Miter lock front lever(black)
185	Miter lock middle plate(black)
186	Inner hexagon screw M8X10(black)
187	Turning table locking screw( <b>black</b> )
188	Cross recessed pan head screw M4X10(zincing)
189	Turning table angle scale indicator(clear with a red line)
190	Flat washer D10 10x 14x1(zincing)
191	Miter lock front plate(black)
192	Miter lock back lever(black)
193	Spring pin 04x25(black)
194	Balancing Foot(light grey)
195	Cross recessed pan head screw M6X35(zincing)
196	Allen wrench M8
197	Working clamp knob(light grey)
198	Working clamp arm(dark grey)
199	Spring pin 03x16(black)
200	Working clamp rod(zincing)
201	Working clamp plate(black)
202	Butterfly screw(assembly)
203	Working clamp sliding rod(black)
204	Cord quoit
205	Flat washer 5 ( 5X10X0.8 )
206	Flat washer 4 ( 5X10X1 )
207	Wrench holder
208	Cross recessed pan head screw M5X8
209	Butterfly screw
210	Sliding fence
211	Fence left label
212	Fence right label
213	connector
214	LOGO Label
215	Turning table label
216	Label
217	Pin 2.5X16