

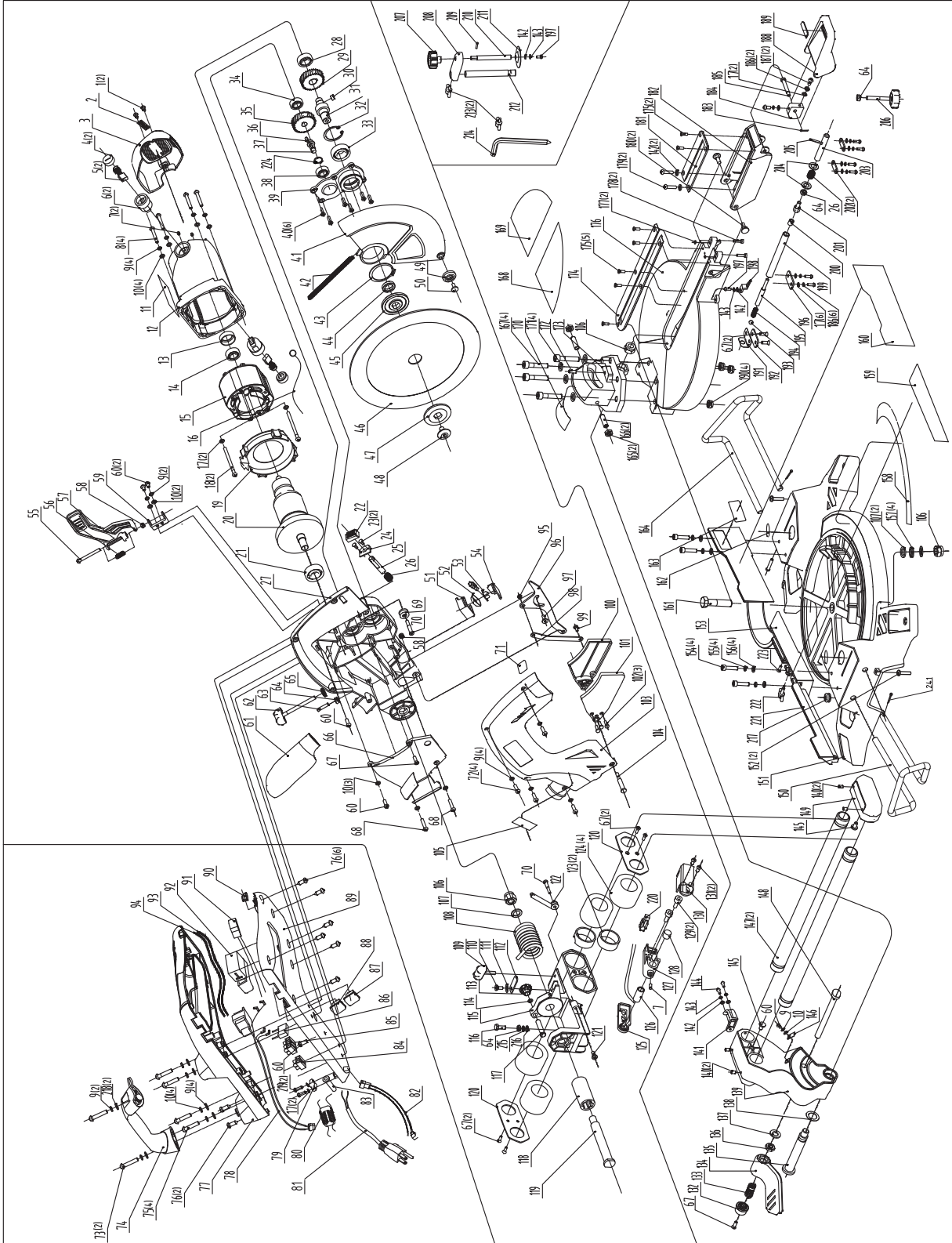


खैतान पावर

کھیتان پاور

KHAIITAN POWER

EXPECT THE BEST



KI SMS 10
10" SLIDING MITER SAW

EXPLOSION VIEW

Professional Series



KHAITAN POWER
EXPECT THE BEST



SPARE PARTS LIST OF KI SMS 10

Part NO.	DESCRIPTION
1	Cross recessed pan head tapping screw ST4.2X10(black)
2	Label
3	Motor back cover
4	Carbon brush cap
5	Carbon brush
6	Carbon brush holder
7	Inner hexagon screw M4X6(black)
8	Cross recessed pan head screw M5X30(zincing)
9	Spring washer 5(zincing)
10	Flat washer 5(zincing) \varnothing 5x \varnothing 10x1
11	Label
12	House
13	Rubber bearing support(NBR)
14	Bearing(6000-2z)
15	Field assembly
16	Field connecting wire(18AWG)
17	Flat washer 5(black) \varnothing 5x \varnothing 10x1
18	Cross recessed pan head tapping screw ST4.8X70(black)
19	Baffle(in black)
20	Armature assembly
21	Bearing(6202-2z)
22	Spindle lock knob(in black)
23	Cross recessed countersunk head screw M4X8(zincing)
24	Spindle lock plate(zincing)
25	Spindle lock pin 45#(black and quench)
26	Spindle lock spring (65Mn)
27	Upper guard(silver)
28	Bearing(6001-2z)
29	Bull gear(black)
30	Flat key 5X12 (black)
31	Output shaft
32	Hole circlip 35(black)
33	Bearing(6003-2RS)
34	Bearing(609-2z)
35	Gear
36	Flat key 4X8(black)
37	SHAFT
38	Bearing(608-2z)
39	Top cover
40	Cross recessed countersunk head screw M5X16(black with threadlocker)
41	Lower guard(silver)
42	Lower guard spring(black)
43	Bearing circlip 42(black)
44	Liner(black)
45	Inner flange(black)
46	Blade
47	Outer flange(black)
48	Flange screw(black)
49	Lower guard rolling wheel(in black)
50	Lower guard rolling wheel screw(black)
51	LED support(in black)
52	LED viewfinder(chrome plating)
53	LED lamp
54	LED glazing(transparent)
55	Special screw \varnothing 5 (zincing)
56	Upper guard self-lock spring(black)
57	Safety lock handle(in black)
58	Loose-proof nut M5(zincing)
59	Safety lock support(zincing)
60	Cross recessed pan head screw M5X10(zincing)
61	Dust bag
62	Height adjustment knob(in black) with M5x55 screw
63	Inner hexagon screw M6X20(black)
64	Nut M6(Zincing)

Part NO.	DESCRIPTION
65	Height adjustment nut(black)
66	Dust cover
67	Cross recessed countersunk head screw M5X10(zincing)
68	Cross recessed pan head screw M5X25(zincing)
69	Spring wheel(in black)
70	Step screw(black)
71	Label
72	Cross recessed pan head screw M5X18(zincing)
73	Cross recessed pan head screw M5X16(zincing)
74	Handle assembly(hyper green)
75	Cross recessed pan head screw M5X40(zincing)
76	Cross recessed pan head tapping screw ST4.2X16(black)
77	Top Handle overmold(hyper green)
78	Transformer
79	Cord clamp
80	Inductor
81	power cord with EU plug, H05VV-F/YF-002, Jingqi
82	Laser and LED connecting line 24AWGx2
83	Cord sleeve(in black)
84	Terminal block(two)
85	Terminal block(three)
86	Capacitance (0.33UF)
87	Laser switch
88	LED switch
89	Lower handle overmold
90	Working light transparent cover
91	Working light
92	Switch trigger
93	Connecting wire A inside handle (18AWG white)
94	Connecting wire B inside handle (18AWG brown)
95	Lower guard lever rivet(black)
96	Lower guard lever(black)
97	Lever locating screw(black)
98	Lower guard cover lever(black)
99	Lower guard cover step screw(black)
100	Lower guard cover on left
101	Lower guard cover on right
102	Lower guard cover rivet(black)
103	Upper guard cover
104	Lower guard back cover locating screw(black)
105	Warning Label
106	Loose-proof nut M12(zincing)
107	Flat washer D12(zincing) \varnothing 10x \varnothing 24x2
108	Torsion spring(black)
109	Linear rod stop knob(in black)
110	Height adjustment step screw(black)
111	Wave washer 6(black)
112	Height adjustment plate(zincing)
113	Bevel lock pin cap(in black)
114	O washer 4.5*8.1*1.8 (rubber)
115	Bracket for upper guard(silver)
116	Hexagon screw M6X20(zincing)
117	Bracket stop pin(black)
118	Torsion spring sleeve(in black)
119	Pivot pin for upper guard(black)
120	Bearing cover(black)
121	Lever screw(black)
122	Sleeve(in black)
123	Bearing support B(in black)
124	Bearing(standard with 25Xc40Xc30)
125	Laser support B(in black)
126	Laser
127	Laser support A(black)
128	Laser transparent plate



खैतान पावर
کھیتان پاور
KHAITAN POWER
EXPECT THE BEST



SPARE PARTS LIST OF KI SMS 10

129	Inner hexagon screw M5X20(zincing)
130	Laser support C(black)
131	Cross recessed pan head tapping screw ST3X8(black)
132	Linear rod support bracket lock knob(light grey)
133	Linear rod support bracket lock handle spring(black)
134	Linear rod support bracket lock handle
135	Pivot pin for linear rod support bracket(black)
136	Nut M10(7mm with zincing)
137	Flat washer D10(zincing)
138	Friction washer(black)
139	Linear rod support bracket arm
140	Inner hexagon screw M5X6(black with threadlocker)
141	Winding support(in black)
142	Flat washer D4(zincing) \varnothing 4x \varnothing 8x0.5
143	Spring washer D4(zincing)
144	Cross recessed pan head screw M4X8(zincing)
145	Bumper(in black)
146	Bevel angle scale indicator(clear with a red line)
147	Linear rod
148	Bevel angle lock pin(black)
149	Linear rod support bracket
150	Left extension bar
151	Base(dark grey)
152	Cross recessed pan head screw M6X35(black)
153	Fence(dark grey)
154	Inner hexagon screw M6X20(black)
155	Spring washer D6(black)
156	Flat washerD6(black)
157	Wave washer 5(black)
158	scale
159	Left Label
160	Right Label
161	Base screw(black)
162	Base Warning Label
163	Label
164	Right extension bar
165	Nut M8(zincing)
166	Inner hexagon screw M8X30(zincing)
167	Inner hexagon screw M8X45(black)
168	Turning Table left Label
169	Turning Table right Label
170	Scral
171	Flat washer D8(black)
172	Inner hexagon screw M5X20(black)
173	Table pivot bracket
174	Slotted plate A
175	Cross recessed countersunk head screw M4X10(zincing)
176	Turning table(dark grey)
177	O washer 3.55x6.15x1.8(in black)

178	Inner hexagon screw M4X12(zincing)
179	Cross recessed pan head screw M4X20(zincing)
180	Extension table screw(black)
181	Slotted plate B(hyper green)
182	Extension table(dark grey)
183	Pin on the table lock handle c2.5X16(zincing)
184	Locking cam(black)
185	Cam pin(black)
186	Spring washer 5(black)
187	Cross recessed pan head screw M5X12(black)
188	Turning table lock handle (dark grey)
189	Turning table lock handle plate(hyper green)
190	Loose-proof nut M8(zincing)
191	Miter lock spring lever(black)
192	Miter lock plate(black)
193	Steel ball in 8mm diameter
194	Miter lock spring(black)
195	Miter lock middle lever(black)
196	Miter lock middle plate(black)
197	Cross recessed pan head screw M4X10(zincing)
198	Turning table angle scale indicator(clear with a red line)
199	Miter lock front lever(black)
200	Inner hexagon screw M8X10(black)
201	Turning table locking screw(black)
202	Miter lock front plate(black)
203	Miter lock back lever(black)
204	Flat washer D10
205	Spring pin \varnothing 4x25(black)
206	Foot
207	Working clamp knob(light grey)
208	Working clamp(dark grey)
209	Spring pin \varnothing 3x16(black)
210	Working clamp rod(black)
211	Working clamp plate(black)
212	Working clamp sliding rod(black)
213	butterfly screw(assembly)
214	Allen wrench M8
215	spring washer D6
216	washer D6
217	rubber sleeve
218	washer D6 \varnothing 5*9*1
219	Cross recessed pan head tapping screw ST4.2X14(black)
220	Plastic connector plug
221	Sliding fence
222	Butterfly screw
223	Cross recessed srew M5x8mm
224	Bearing spring ring (black)
241	Pin \varnothing 2.5X16