

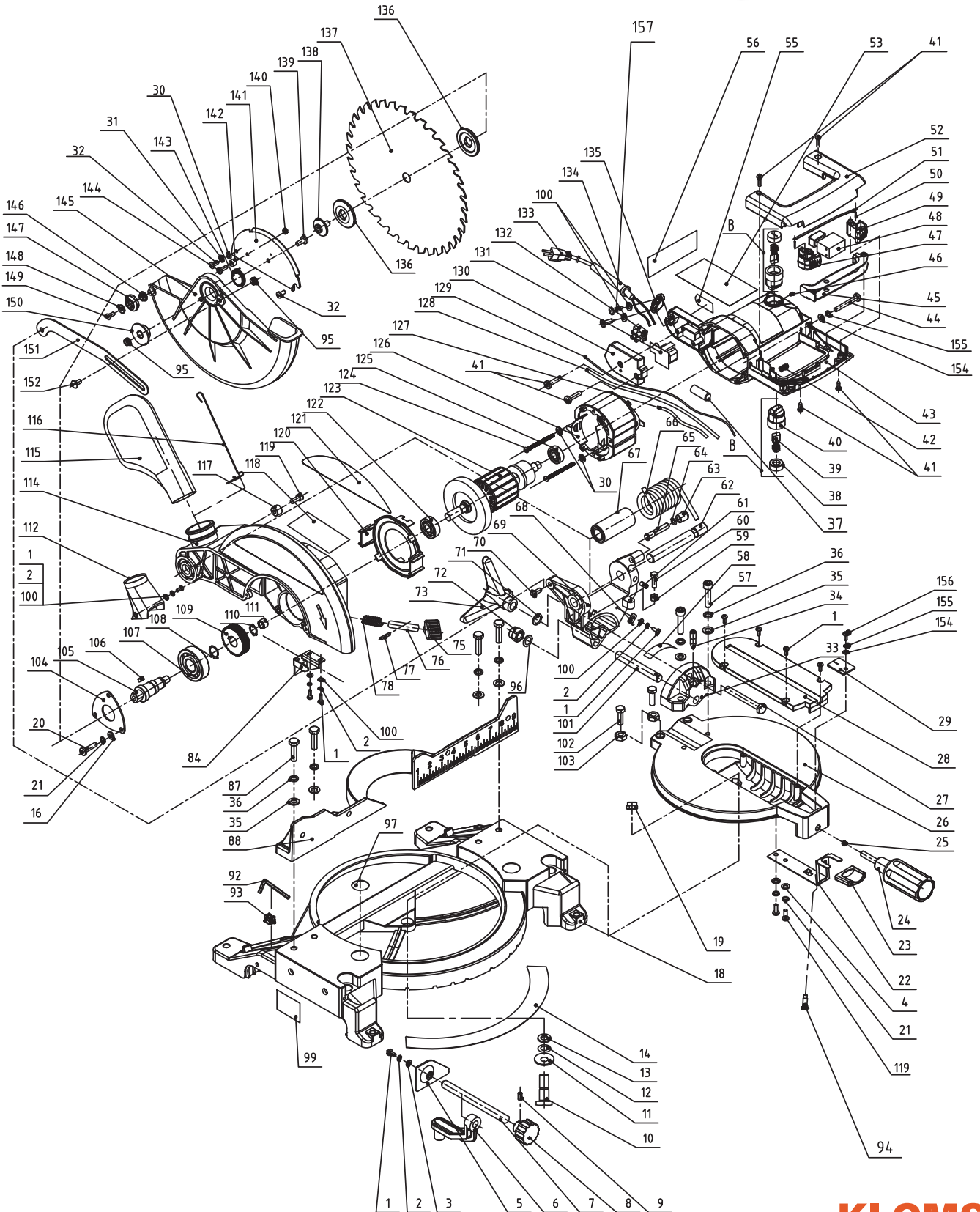


खैतान पावर

کھیتان پاور

KHAIITAN POWER

EXPECT THE BEST



KI CMS 10

10" COMPOUND MITER SAW

EXPLOSION VIEW

Professional Series



SPARE PARTS LIST OF KI CMS10

PART NO.	description
1	M4X10 SCREW
2	φ 4 SPRING WASHER
3	φ 4 FLAT WASHER
4	φ 6 FLAT WASHER
5	CLAMP PLATE
6	CLAMP CONNECTOR
7	CLAMP ROD
8	CLAMP HANDLE
9	M6X8 SCREW
10	LENER SCREW
11	BASE WASHER
12	φ 12 WAVE WASHER
13	φ 12x φ 24x2.5 WASHER
14	MITER LABEL
15	φ 5 SPRING WASHER
16	φ 5X φ 10X1 WASHER
17	M5X10 SCREW
18	
19	M10 TIGHTEN NUT
20	M6X16 SCREW
21	φ 6 SPRING WASHER
22	SPRING PLATE
23	SPRING PLATE KNOB
24	ADJUSTMENT HANDLE
25	MITER INSERT
26	ROTARY TABLE
27	M10X80 SCREW
28	SLOTTED PLATE
29	miter pointer
30	φ 5 washer
31	φ 5 spring washer
32	M5X10 screw
33	connect base
34	tighten screw for rotary table pin
35	φ 8x φ 16x1.5 washer
36	φ 8 spring washer
37	φ 10 fiberglass sleeve
38	Brush cap
39	Carbon brush
40	Carbon brush holder
41	ST4.2x12 screw
42	switch self-lock spring
43	motor housing
44	M5X40 screw
45	Switch knob
46	M4X4 tighten screw
47	Anti-self-locking switch left
48	switch
49	Anti-self-locking switch right
50	switch self-lock lever pin
51	switch self-lock lever

52	upper handle cover
53	rating label
54	
55	TRANFORMER LABEL
56	SIDE LABEL
57	M8X35 screw
58	bevel label
59	M6 NUT
60	M6x20 SCREW
61	M6X12 tighen screw
62	bracket pin
63	cap
64	φ 4.5X φ 1.8 O-ring
65	Indenter positioning pin
66	Big Spring
67	locating sleeve
68	bevel pointer
69	bracket
70	lever screw
71	φ 10x φ 20x2 washer
72	M12 tighten NUT
73	Trigeminal handwheel
74	
75	Shaft lock button
76	Shaft lock pin
77	Spring pin φ 3x25
78	Shaft lock spring
79	M4X14 SCREW
80	
81	
82	
83	
84	Laser fixation plate
85	
86	
87	M8X30 SCREW
88	BAFFLE
89	
90	
91	
92	ALLEN WRENCH
93	WRENCH HOLDER
94	LIMIT SCREW
95	ST4.2x14 SCREW
96	φ 12x φ 20x2 WASHER
97	WARNING LABEL
98	
99	
100	φ 4X φ 9X0.8
101	BEVEL PIN
102	M8X25 SCREW
103	M8 NUT
104	BEARING PLATE
105	Output shaft
106	Flat key 5X12



SPARE PARTS LIST OF KI CMS10

107	6304-2RS BEARING
108	SHAFT CIRCLIP ϕ 20
109	Gear
110	SHAFT CIRCLIP ϕ 16
111	Bearing HK1016
112	DUST PORT
113	
114	UPPER GUARD
115	DUST BAG
116	DUST BAG WIRE
117	BUFFER
118	GUARD LABEL 2
119	M6X16
120	BAFFLE RING
121	GUARD LABEL 1
122	6201-2RS BEARING
123	Armature
124	ST4. 8X65 SCREW
125	6000-2RS BEARING
126	STATOR
127	WIRE
128	SWITCH CONNECTING WIRE
129	FIELD CONNECTING WIRE
130	COVER
131	TRANSFORMER
132	TERMINAL BLOCK
133	POWER CORD
134	CORD SLEEVE
135	CORD CLAMP
136	FLANGE
137	Blade 28T
138	FLANGE SCREW
139	M6X12 SCREW
140	M4 TIGHTEN NUT
141	LOWER GUARD plate
142	LOWER GUARD buffer
143	LOWER GUARD spring
144	M4X12 SCREW
145	LOWER GUARD
146	LOWER GUARD GUIDE WHEEL SLEEVE
147	LOWER GUARD GUIDE WHEEL
148	LOWER GUARD GUIDE WHEEL FLANGE
149	ST2. 9X6.5 SCREW
150	LOWER GUARD FLANGE
151	LEVER
152	LOWER GUARD SCREW